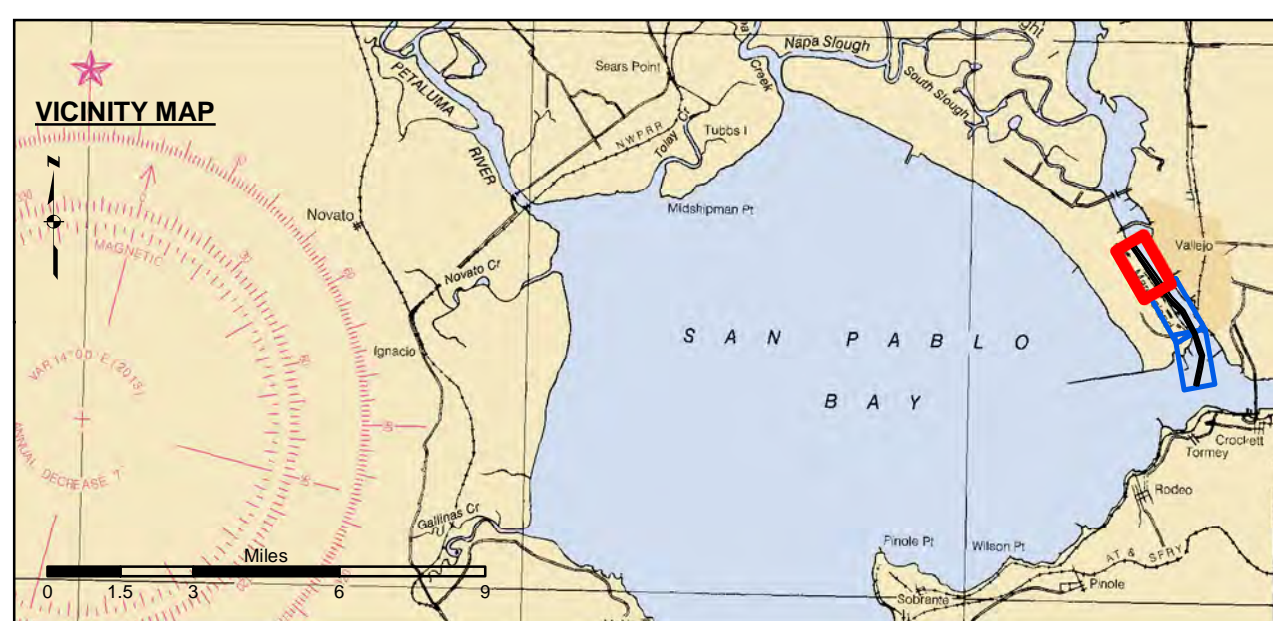


NAD 83 CHANNEL ANGLE POINT		
Angle Pt	X	Y
C01	6051581.21	2230222.67
C02	6055795.81	2224330.97
C03	6057191.11	2222944.87
C04	6058518.11	2220503.97
C05	6059347.51	2218102.87
C06	6058696.31	2214902.17

NAD 83 CHANNEL ANGLE POINT		
Angle Pt	X	Y
1	6051829.91	2230390.67
2	6052091.81	2230024.57
3	6056039.61	2224505.87
4	6057346.91	2223082.07
5	6058699.11	2220590.07
6	6059555.31	2218121.17
7	6058891.41	2214858.27
8	6058501.11	2214945.97
9	6059139.71	2218084.57
10	6058937.71	2218596.57
11	6058337.01	2220417.87
12	6057035.31	2222807.67
13	6056140.51	2223621.17
14	6054337.11	2225843.77
15	6051448.71	2230133.17



Federal Navigation Channel	Beacon, General	Contours	-30
Shoaling Area	Obstruction Point		-29
Placement Area	Navigation Buoy	-28	
Anchorage Area	Navigation Buoy	-27	
Wreck Area	Shoalest Sounding*	-26	
Submerged Wreck			
Angle Point			

NOTES:
 DRAWING NOT TO BE USED FOR NAVIGATION. ONLY CHANNEL CONDITION AT DATE OF SURVEY.
 THE LOCATION OF ALL NAVIGATION AIDS ARE BASED ON INFORMATION PROVIDED BY THE U.S. COAST GUARD. BUOY LOCATIONS REPRESENT THE POSITION OF THE SINKER ONLY.

SURVEYED BY THE CORPS OF ENGINEERS.
 SOUNDING FOR THE CHANNEL MEASURED WITH MULTIBEAM ECHOSOUNDER AND ARE SHOWN TO THE NEAREST TENTH FOOT.

SOUNDINGS ARE BASED ON THE DATUM OF MEAN LOWER LOW WATER AT THE LOCALITY.

VERTICAL CONTROL:
 USACE BM NAPAR03, MLLW=11.699 FT
 MARK LOCATED ON PIER 56, MARE ISLAND

NOS BM 5216 K 1976 (PID-J76537), MLLW = 12.136 FT
 MARK US LOCATED AT SOUTH END OF MARE ISLAND
 http://idesandcurrents.noaa.gov/data_menu.shtml?stn=9415218
 MARE ISLAND, CA & TYPE = BENCH MARK SHEETS

TIDE GAUGE LOCATION:
 1. NOAA STATION 941 5218 - ONLINE
 2. MARE ISLAND BERTH 2

HORIZONTAL GPS CONTROL
 COAST GUARD D-BEACON

PLANE GRID AND COORDINATES ARE BASED ON THE STATE OF CALIFORNIA COORDINATE SYSTEM, LAMBERT CONFORMAL PROJECTION, ZONE III NAD 83, CALIFORNIA, AS DESCRIBED IN SPECIAL PUBLICATION NO. 235, PUBLISHED BY NATIONAL OCEAN SURVEY.

1.00 INDICATES THE NUMBER AND BEGINNING OF A LINE OF SOUNDINGS.
 PROJECT DEPTH IS 30 FEET FOR MAIN CHANNEL AND 36 FT FOR NAVY CHANNEL

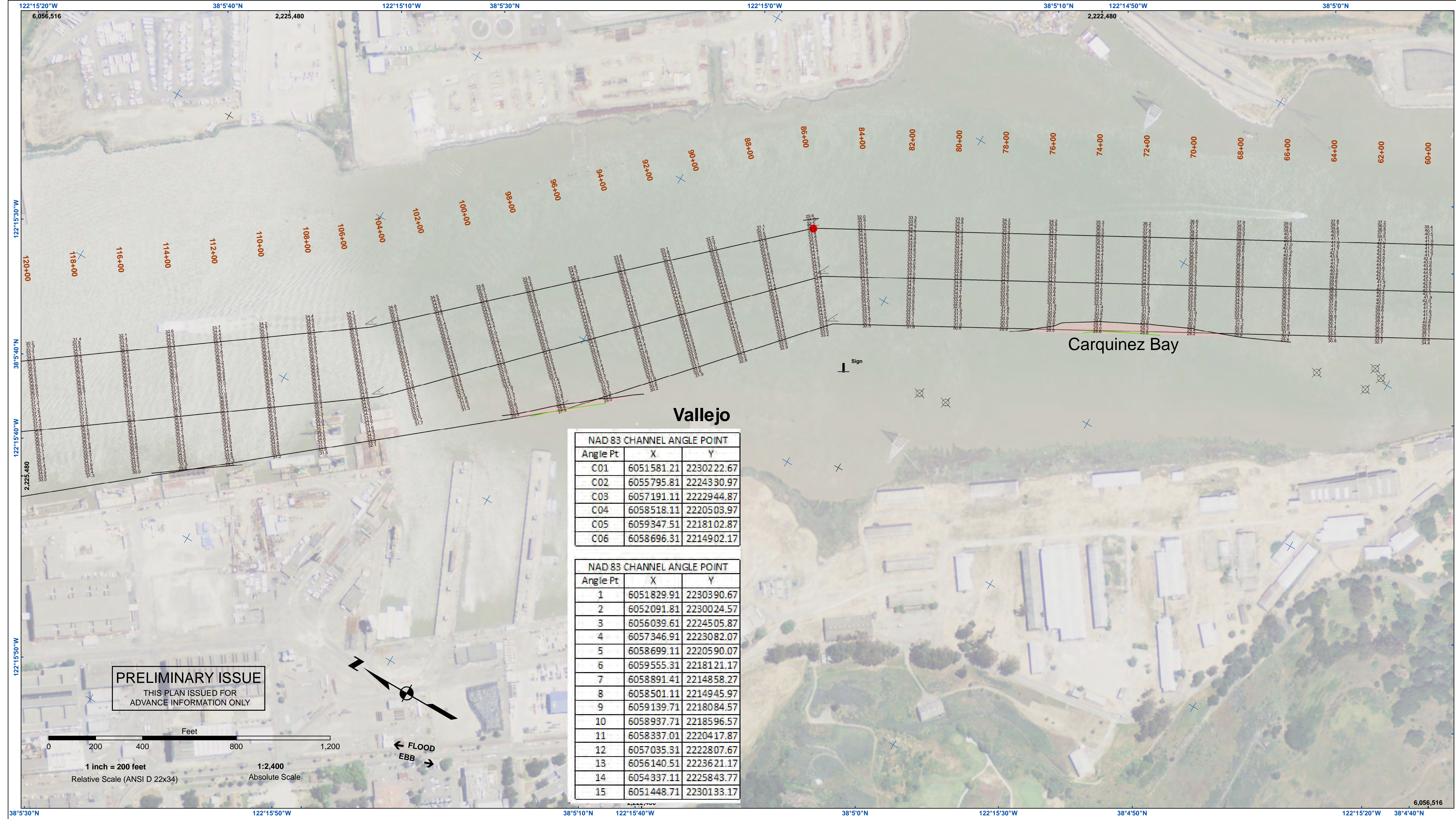
US Army Corps of Engineers
 San Francisco District
 450 Golden Gate Avenue
 San Francisco, CA 94102

DISCLAIMER: The United States Government furnishes this information for the general information of the user. The user is responsible for the accuracy and reliability of the information and for its use. The United States Government makes no warranty, expressed or implied, concerning the accuracy, completeness, or timeliness of the information and the data furnished hereunder. The United States Government shall be under no liability whatsoever to any person by reason of any use made thereof. These data belong to the Government. Therefore, the recipient may not transfer these data to others without also transferring this Disclaimer.

Prepared Under the Direction of: TIMOTHY W. SHEBESTA LT Colonel, C.E. District Engineer	Chart Date: May 09, 2024
Submitted: Hydro Survey Team Leader	Designed by: PDT
Recommended: Chief, Hydro Survey Section	Plotted By: PDT
Approved: Chief, Construction Branch	Checked By: PDT
	Drawn by: PDT

CALIFORNIA
**MARE ISLAND STRAIT
 CONDITION SURVEY**
 2 MAY 2024

**Sheet
 Reference
 Number**
1 of 3



PRELIMINARY ISSUE
THIS PLAN ISSUED FOR
ADVANCE INFORMATION ONLY

NAD 83 CHANNEL ANGLE POINT		
Angle Pt	X	Y
C01	6051581.21	2230222.67
C02	6055795.81	2224330.97
C03	6057191.11	2222944.87
C04	6058518.11	2220503.97
C05	6059347.51	2218102.87
C06	6058696.31	2214902.17

NAD 83 CHANNEL ANGLE POINT		
Angle Pt	X	Y
1	6051829.91	2230390.67
2	6052091.81	2230024.57
3	6056039.61	2224505.87
4	6057346.91	2223082.07
5	6058699.11	2220590.07
6	6059555.31	2218121.17
7	6058891.41	2214858.27
8	6058501.11	2214945.97
9	6059139.71	2218084.57
10	6058937.71	2218596.57
11	6058337.01	2220417.87
12	6057035.31	2222807.67
13	6056140.51	2223621.17
14	6054337.11	2225843.77
15	6051448.71	2230133.17



— Federal Navigation Channel	⊥ Beacon, General	Contours
■ Shoaling Area	⊗ Obstruction Point	— -30
□ Placement Area	◆ Navigation Buoy	— -29
- - - Anchorage Area	◇ Navigation Buoy	— -28
▨ Wreck Area	● Shoalest Sounding*	— -27
⚓ Submerged Wreck		— -26
∠ Angle Point		

NOTES:
DRAWING NOT TO BE USED FOR NAVIGATION. ONLY CHANNEL CONDITION AT DATE OF SURVEY.
THE LOCATION OF ALL NAVIGATION AIDS ARE BASED ON INFORMATION PROVIDED BY THE U.S. COAST GUARD. BUOY LOCATIONS REPRESENT THE POSITION OF THE SINKER ONLY.
SURVEYED BY THE CORPS OF ENGINEERS.
SOUNDING FOR THE CHANNEL MEASURED WITH MULTIBEAM ECHOSOUNDER AND ARE SHOWN TO THE NEAREST TENTH FOOT.
SOUNDINGS ARE BASED ON THE DATUM OF MEAN LOWER LOW WATER AT THE LOCALITY.
VERTICAL CONTROL:
USACE BM NAPAR03, MLLW=11.609 FT
MARK LOCATED ON PIER 56, MARE ISLAND

NOS BM 5216 K 1976 (PID-J76537), MLLW = 12.136 FT
MARK US LOCATED AT SOUTH END OF MARE ISLAND
http://idesandcurrents.noaa.gov/data_menu.shtml?stn=9415218
MARE ISLAND, CA & TYPE = BENCH MARK SHEETS

TIDE GAUGE LOCATION:
1. NOAA STATION 941 5218 - ONLINE
2. MARE ISLAND BERTH 2

HORIZONTAL GPS CONTROL
COAST GUARD D-BEACON

PLANE GRID AND COORDINATES ARE BASED ON THE STATE OF CALIFORNIA COORDINATE SYSTEM, LAMBERT CONFORMAL PROJECTION, ZONE III NAD 83, CALIFORNIA, AS DESCRIBED IN SPECIAL PUBLICATION NO. 235, PUBLISHED BY NATIONAL OCEAN SURVEY.

1.00 INDICATES THE NUMBER AND BEGINNING OF A LINE OF SOUNDINGS.
PROJECT DEPTH IS 30 FEET FOR MAIN CHANNEL AND 36 FT FOR NAVY CHANNEL

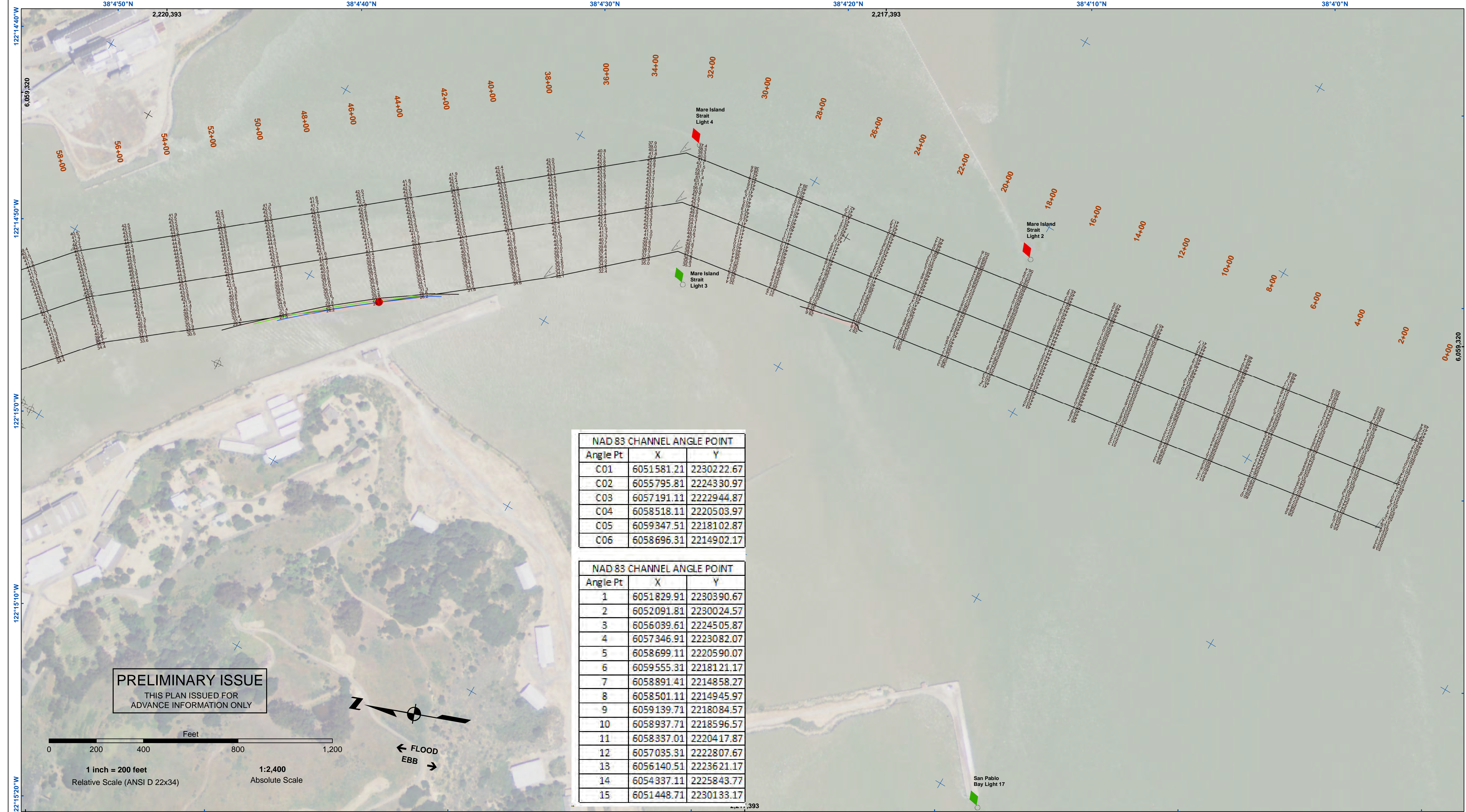


DISCLAIMER: The United States Government furnishes access to this data for the purpose of performing operations... The data represents the results of data collection... The user is responsible for the results of any application of the data for other than its intended purpose. The United States shall be under no liability whatsoever to any person by reason of any use made thereof. These data belong to the Government. Therefore the recipient may not transfer these data to others without also transferring this disclaimer.

Prepared Under the Direction of TIMOTHY W. SHEBESTA LT COLONEL, C.E. DISTRICT ENGINEER	Chart Date: May 09, 2024
Subject: Hydro Survey Team Leader	Designed by: PDT
Recommended: Chief, Hydro Survey Section	Plotted by: PDT
Approved: Chief, Construction Branch	Checked by: PDT
	Drawn by: PDT

CALIFORNIA
SOLANO COUNTY
MARE ISLAND STRAIT
CONDITION SURVEY
2 MAY 2024

Sheet Reference Number
2 of 3



NAD 83 CHANNEL ANGLE POINT		
Angle Pt	X	Y
C01	6051581.21	2230222.67
C02	6055795.81	2224330.97
C03	6057191.11	2222944.87
C04	6058518.11	2220503.97
C05	6059347.51	2218102.87
C06	6058696.31	2214902.17

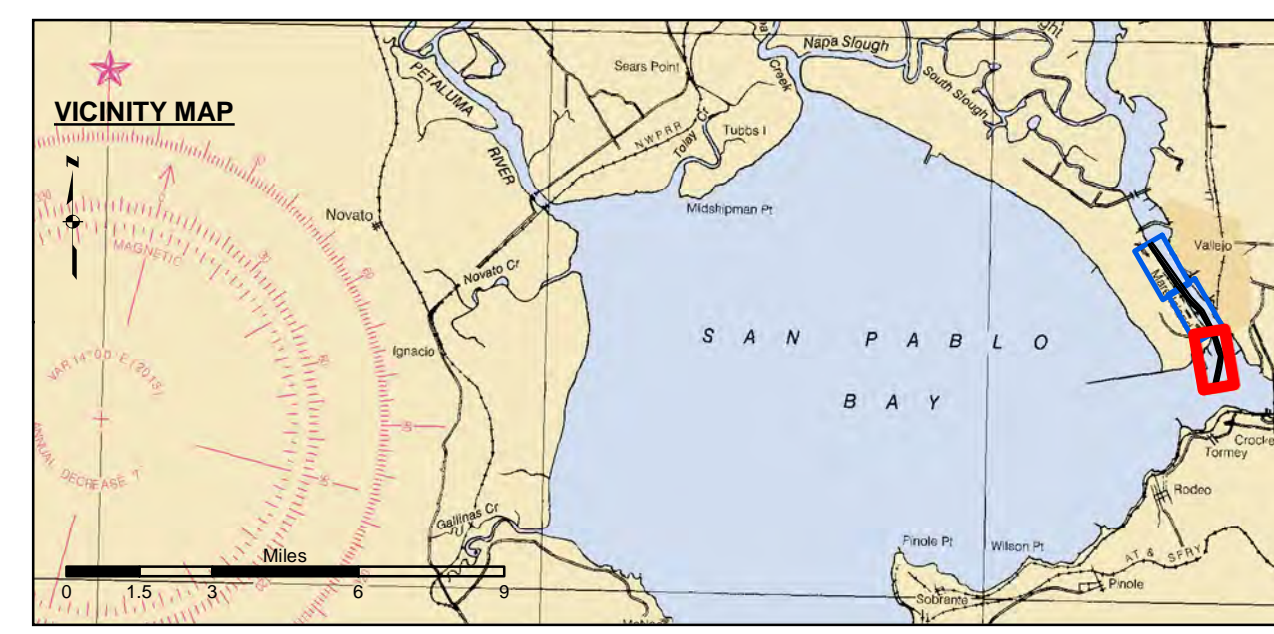
NAD 83 CHANNEL ANGLE POINT		
Angle Pt	X	Y
1	6051829.91	2230390.67
2	6052091.81	2230024.57
3	6056039.61	2224505.87
4	6057346.91	2223082.07
5	6058699.11	2220590.07
6	6059555.31	2218121.17
7	6058891.41	2214858.27
8	6058501.11	2214945.97
9	6059139.71	2218084.57
10	6058937.71	2218596.57
11	6058337.01	2220417.87
12	6057035.31	2222807.67
13	6056140.51	2223621.17
14	6054337.11	2225843.77
15	6051448.71	2230133.17

US Army Corps of Engineers
 San Francisco District
 450 Golden Gate Avenue
 San Francisco, CA 94102

DISCLAIMER: The United States Government furnishes no warranty, expressed or implied, concerning the accuracy, completeness, or reliability of the information and the data furnished. The United States shall be under no liability whatsoever to any person by reason of any use made thereof. These data belong to the Government. Therefore the recipient may not transfer these data to others without also transferring this Disclaimer.

Prepared Under the Direction of TIMOTHY W. SHEBESTA LT COLONEL, C.E. DISTRICT ENGINEER	Chart Date: May 09, 2024
Submitted: Hydro Survey Team Leader	Designed by: PDT
Recommended: Chief, Hydro Survey Section	Plotted by: PDT
Approved: Chief, Construction Branch	Checked by: PDT
	Drawn by: PDT

CALIFORNIA
**MARE ISLAND STRAIT
 CONDITION SURVEY**
 2 MAY 2024



— Federal Navigation Channel	⊥ Beacon, General	Contours
■ Shoaling Area	⊗ Obstruction Point	— -30
□ Placement Area	◇ Navigation Buoy	— -29
- - - Anchorage Area	◇ Navigation Buoy	— -28
▨ Wreck Area	◇ Shoalest Sounding*	— -27
✈ Submerged Wreck		— -26
∠ Angle Point		

NOTES:
 DRAWING NOT TO BE USED FOR NAVIGATION. ONLY CHANNEL CONDITION AT DATE OF SURVEY.
 THE LOCATION OF ALL NAVIGATION AIDS ARE BASED ON INFORMATION PROVIDED BY THE U.S. COAST GUARD. BUOY LOCATIONS REPRESENT THE POSITION OF THE SINKER ONLY.
 SURVEYED BY THE CORPS OF ENGINEERS.
 SOUNDING FOR THE CHANNEL MEASURED WITH MULTIBEAM ECHOSOUNDER AND ARE SHOWN TO THE NEAREST TENTH FOOT.
 SOUNDINGS ARE BASED ON THE DATUM OF MEAN LOWER LOW WATER AT THE LOCALITY.
 VERTICAL CONTROL:
 USACE BM NAPAR03, MLLW=11.609 FT
 MARK LOCATED ON PIER 56, MARE ISLAND

NOS 8M 5218 K 1976 (PID-J79537), MLLW = 12.136 FT
 MARK US LOCATED AT SOUTH END OF MARE ISLAND
 http://idesandcurrents.noaa.gov/data_menu.shtml?stn=9415218
 MARE ISLAND, CA & TYPE = BENCH MARK SHEETS

TIDE GAUGE LOCATION:
 1. NOAA STATION 941 5218 - ONLINE
 2. MARE ISLAND BERTH 2

HORIZONTAL GPS CONTROL
 COAST GUARD D-BEACON

PLANE GRID AND COORDINATES ARE BASED ON THE STATE OF CALIFORNIA COORDINATE SYSTEM, LAMBERT CONFORMAL PROJECTION, ZONE III NAD 83, CALIFORNIA, AS DESCRIBED IN SPECIAL PUBLICATION NO. 235, PUBLISHED BY NATIONAL OCEAN SURVEY.

1.00 INDICATES THE NUMBER AND BEGINNING OF A LINE OF SOUNDINGS.
 PROJECT DEPTH IS 30 FEET FOR MAIN CHANNEL AND 36 FT FOR NAVY CHANNEL